

Stiebel Industries LLC
P O Box 9593
Ras Al Khaimah, UAE

Company: _____
 Contact: _____
 P O Box: _____
 Address: _____
 Phone: _____
 Fax: _____
 Email: _____

Technical Questionnaire Conveyor drives

Input

Power P kW Speed n_2 min^{-1} or

drum \varnothing mm

Belt speed: v m/s

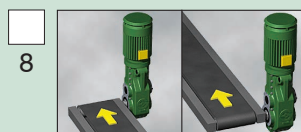
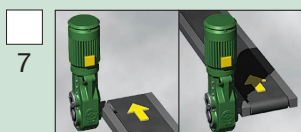
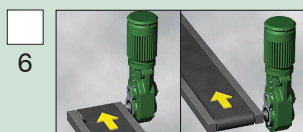
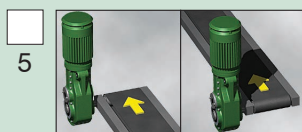
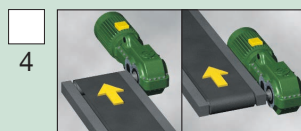
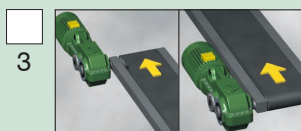
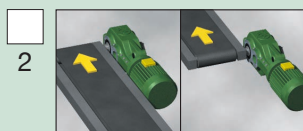
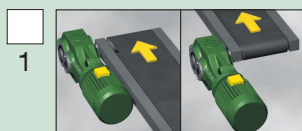
Type of output

Hollow sleeve shaft \varnothing mm

Hollow shaft with shrinking disc \varnothing mm

with cover

Installation Situation



Permissible inclination: Motor downwards 25°, Motor upwards 12° • Installation situation 5 - 8: Motor with canopy Gears with brake motor inclination downwards is not permissible

Options

Reverse lock Thermistors Separate driven fan motor brake Motor brake with manual release

E-Motor

Voltage V Frequency V Type of enclosure V other

Operating conditions

Environment: normal dusty humid other

Ambient temperature: Minimum C° Maximum C°

Choice of colour

Standard colour : RAL 7035 light grey

Different choice of colour against more cost of 100 US\$ / 350 AED